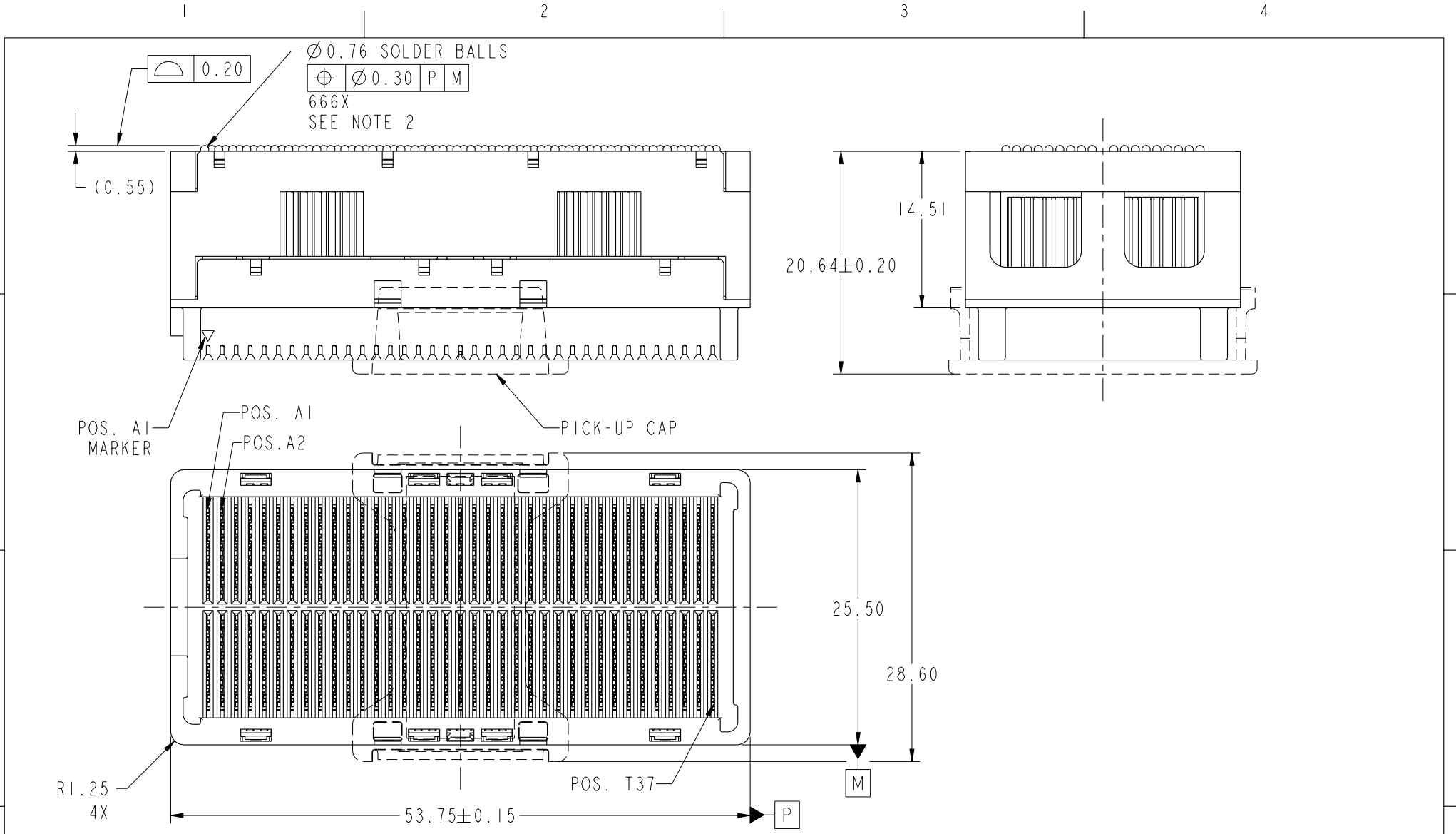




Copyright FCI.



www.fciconnect.com		surface 3.2 ASME Y14.5	tolerance std -	projection ASME	mm
		TOLERANCES UNLESS OTHERWISE SPECIFIED			
Dr	L. POTTEIGER	1/30/06	ANGULAR	size	A4
Eng	D. HARPER	1/30/06	LINEAR	0.X	± 0.3
Chr	D. HARPER	1/30/06	$0^\circ \pm 2^\circ$	0.XX	± 0.10
Appr	D. HARPER	1/30/06		0.XXX	± 0.050
			Product family	GIG-Array	Spec ref
			-		-
FCI			GIG-Array 15mm RECEPTACLE		dwg no
			ASSY, 296 SIG. POS.		10060913
			Rev.	B	
catalog no			-	CUSTOMER	sheet 1 of 4

rev	ecn no	dr	date
A	V06-0394	LP	2006/05/04
B	V07-0618	LP	2007/10/15
-	-	-	-
-	-	-	-
-	-	-	-
-	-	-	-

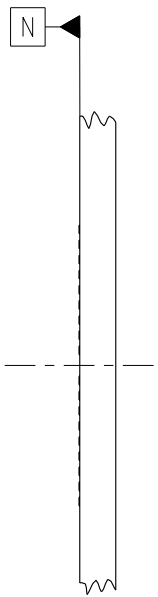
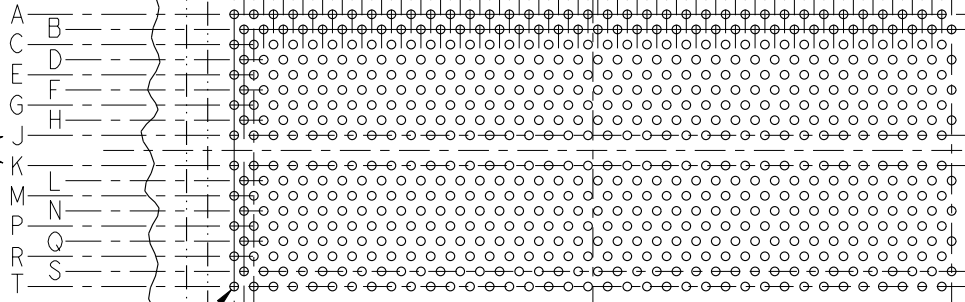
REV F - 2006-04-17

1 2 3 4

KEY ORIENTATION
SILK-SCREEN
(OPTIONAL)

SEE NOTES
4 & 5.

④ CONTACTS IN
ROWS J & K ARE
TIED TOGETHER
(COMMONED)



(R1.25)
4X

2.00

18.00

(25.50)

9.00

1.00
8X
(2 PLACES)

STENCIL CONNECTOR OUTLINE
ONTO BOARD.

Ø 0.60
Ø 0.55
PAD SIZE
666X
SEE NOTE 6

0.65
73X

1.30
36X

23.725

47.45

(53.75)

BOARD PATTERN



Copyright FCI.



title GIG-Array 15mm RECEPTACLE
ASSY, 296 SIG. POS.
catalog no -

dwg no 10060913
CUSTOMER

Rev. B
sheet 2 of 4

REV F - 2006-04-17

2

PDM: Rev:B

STATUS:Released

4 Printed: Nov 08, 2008

1

2

3

4

A

B

C

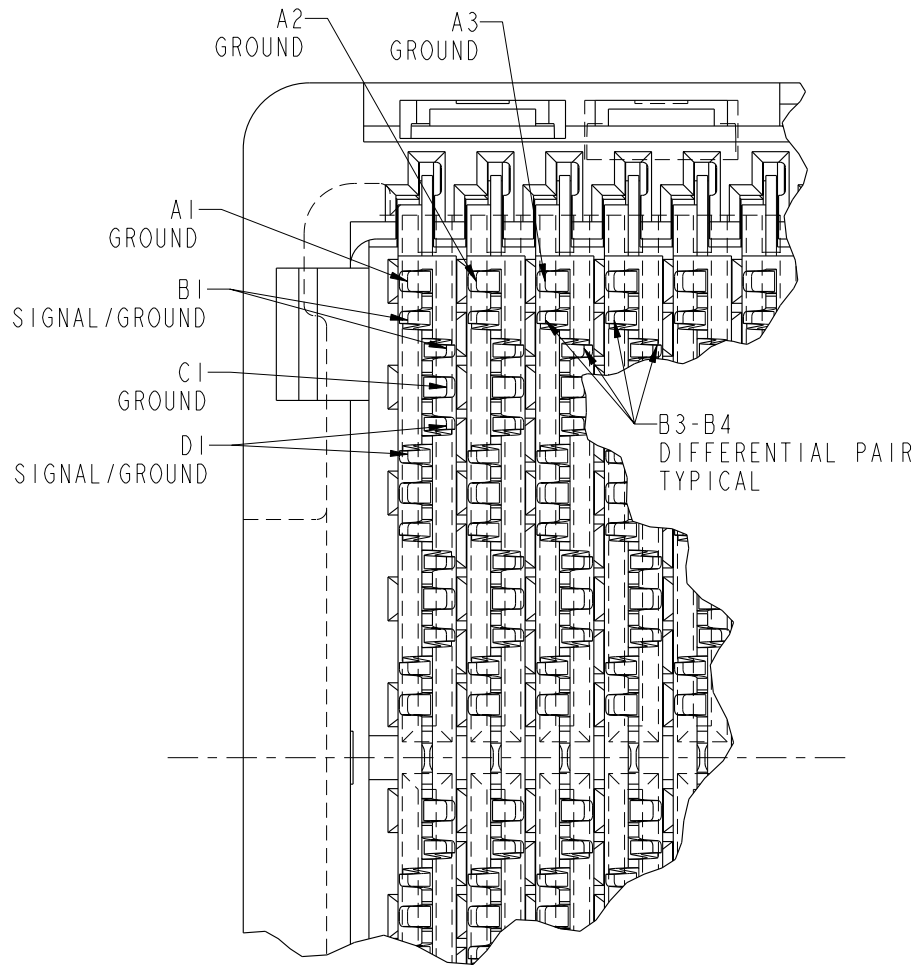
D

A

B

C

D



**RECEPTACLE INTERFACE
DESCRIPTION**



Copyright FCI.

REV F - 2006-04-17

	title GIG-Array 15mm RECEPTACLE ASSY, 296 SIG. POS.	dwg no 10060913	Rev. B
	catalog no -	CUSTOMER	sheet 3 of 4

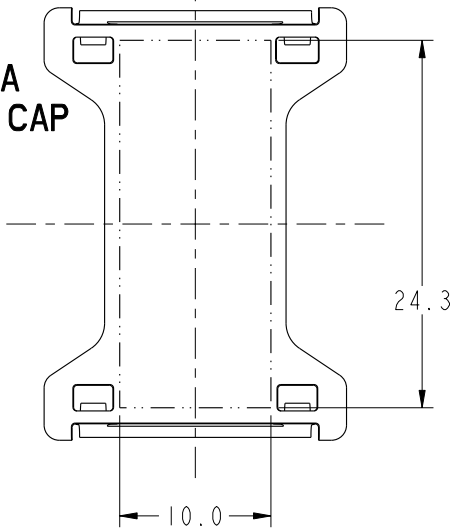
PDM: Rev:B

STATUS: Released

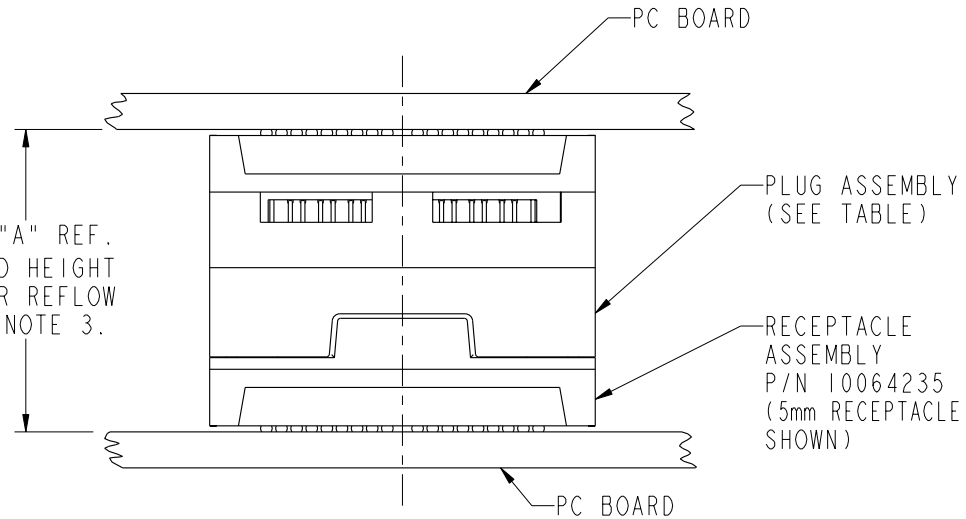
4 Printed: Nov 08, 2008

PRODUCT NUMBER	SOLDER BALL
10060913-001	SnPb
10060913-001LF	SnAgCu LEADFREE SEE NOTE 7 & 8

**FLAT AREA
FOR PICK-UP CAP**
SCALE 2:1



DIM "A" REF.
MATED HEIGHT
AFTER REFLOW
SEE NOTE 3.



END VIEW OF MATED CONNECTORS
SCALE 2:1

NOTES:

- ① MATERIAL:
HOUSING: LCP
CONTACT: COPPER ALLOY
PLATING (CONTACT): Au OVER Ni.
UL RATING: 94 V-0
SOLDERBALL: (SEE TABLE) EUTECTIC
SnPb OR LEAD FREE 95.5 Sn/4Ag/0.5Cu.
- ② SOLDER BALLS WILL NOT BE PERFECT SPHERICAL SHAPE DUE TO REFLOW ATTACHMENT.
- ③ MATED HEIGHT EFFECTED BY CUSTOMERS' PCB PAD SIZE, PLATING, SOLDER REFLOW PROFILE & SOLDER PASTE.
- ④ CONTACTS IN ROWS A,C,E,G,J,K,M,P,R AND T ARE SINGLE BEAM CONTACTS USED AS GROUND PINS.
(NOTE: CONTACTS IN ROWS J & K ARE TIED TOGETHER [COMMONED])
- ⑤ CONTACTS IN ROWS B,D,F,H,L,N,Q AND S ARE DUAL BEAM CONTACTS, TYPICALLY USED AS SIGNAL PINS.
- ⑥ SPECIFIED POSITIONAL TOLERANCE DEFINES PAD TO PAD LOCATION WITHIN LAND PATTERN. POSITIONAL TOLERANCE OF LAND PATTERN TO FUDICIAL MARKS OR PCB DATUMS SHALL BE DEFINED BY CUSTOMER. FOR RECOMMENDED PRODUCT APPLICATION AND PCB DESIGN DETAILS, SEE DOC. NO. GS-20-016.
- ⑦ FOR PROPER APPLICATION FOLLOW FCI APPLICATION SPECIFICATION GS-20-033. LEAD FREE SOLDER BALLS WILL NOT SOLDER PROPERLY IN A LEADED SOLDER PROCESS DUE TO A HIGHER REFLOW TEMPERATURE. LEADFREE PRODUCT IS THEREFORE NOT BACKWARDS COMPATIBLE WITH LEADED OR SOME SOLDERING APPLICATIONS. REFERENCE FCI APPLICATION SPECIFICATION.
- ⑧ THIS PRODUCT MEETS THE EUROPEAN UNION DIRECTIVES AND OTHER COUNTRY REGULATIONS AS DESCRIBED IN GS-22-008. PRODUCT MEETING THIS DIRECTIVE IS IDENTIFIED IN THE CODE NUMBER MARKED ON EACH PART BY HAVING AN "X" IN THE SEVENTH CHARACTER POSITION.

DIM. "A"	PLUG ASSEMBLY P/N
25	55720
27	10026804
28	10055143
30	55700
35	55727
40	10054784

Copyright FCI.



TITLE	GIG-Array 15mm RECEPTACLE		dwg no	10060913	Rev.	B
	ASSY, 296 SIG. POS.					
catalog no		-	CUSTOMER		sheet 4 of 4	